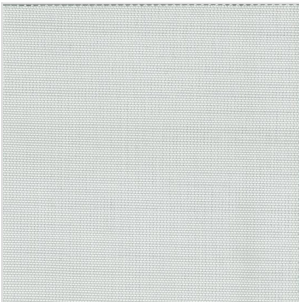


# Soltis Touch 3 % (Hors collection)

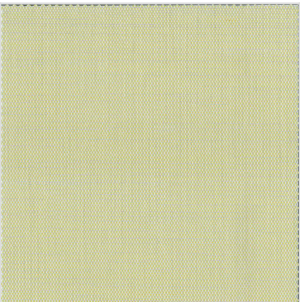
filtersun



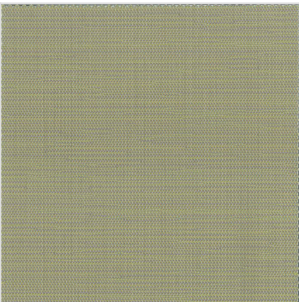
7653-50937



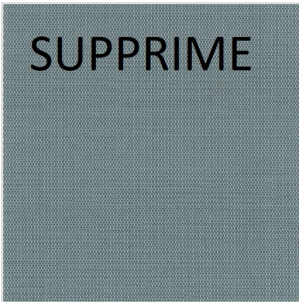
7653-50940



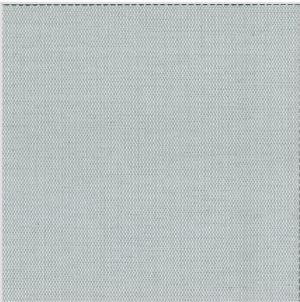
7653-50941



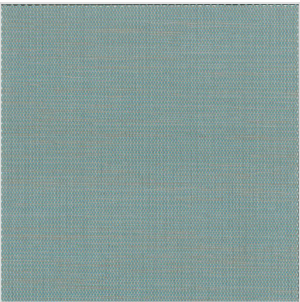
7653-50942



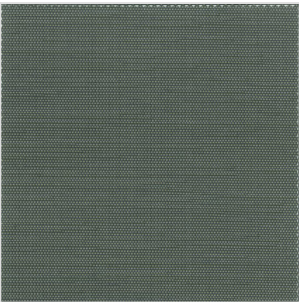
7653-50943



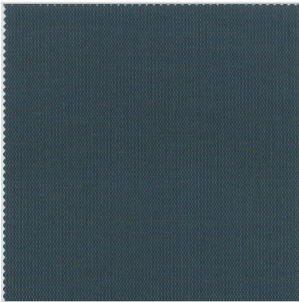
7653-50946



7653-50947



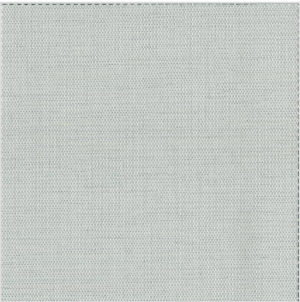
7653-50948



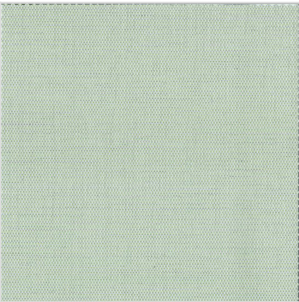
7653-50950



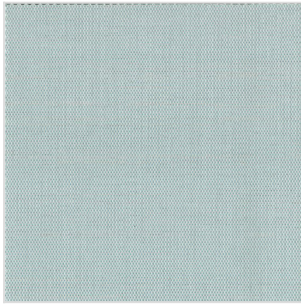
7653-50952



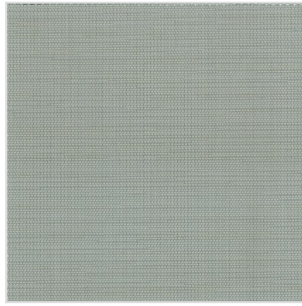
7653-50953



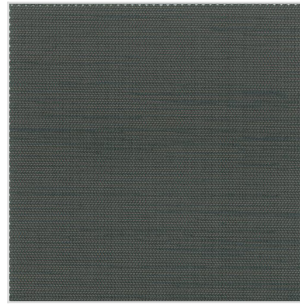
7653-50954



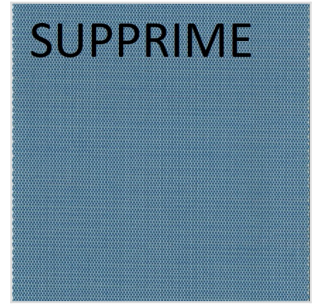
7653-50955



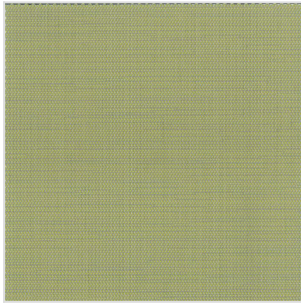
7653-50957



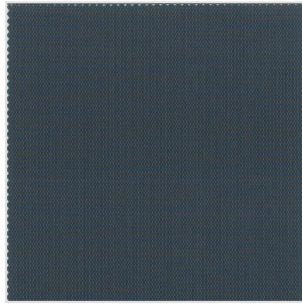
7653-50958



7653-50961



7653-50962








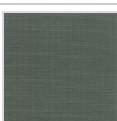
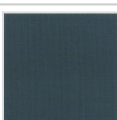










7653-50963

  
Rouleau intérieur  
Tarif 5 - Plus value : 63.03 € / m<sup>2</sup>



<b>Poids (en g/m<sup>2</sup>)</b>	470
<b>Coeff. ouverture (en %)</b>	3.00
<b>Composition</b>	20 % Polyester - 72 % PVC - 8 % Acrylique
<b>Soudable</b>	Oui
<b>Entretien</b>	Épongeable
<b>Sens d'enroulement</b>	Vertical et horizontal
<b>Largeur de laize (mm)</b>	2700

Recto	Réf. rouleaux	Transmission solaire	Réflexion solaire	Absorption solaire	gtot	Transmission lumière visible
	7653-50937	8 %	55 %	37 %	0,15	7 %
	7653-50940	4 %	9 %	87 %	0,28	4 %
	7653-50941	7 %	48 %	45 %	0,18	4 %
	7653-50942	5 %	31 %	64 %	0,23	4 %
	7653-50943	3 %	23 %	74 %	0,24	3 %
	7653-50946	6 %	45 %	49 %	0,18	6 %
	7653-50947	6 %	33 %	61 %	0,22	5 %
	7653-50948	5 %	15 %	80 %	0,27	5 %
	7653-50950	4 %	11 %	85 %	0,28	4 %
	7653-50952	5 %	25 %	70 %	0,24	4 %

Recto	Réf. rouleaux	Transmission solaire	Réflexion solaire	Absorption solaire	gtot	Transmission lumière visible
	7653-50953	7 %	52 %	41 %	0,16	6 %
	7653-50954	7 %	44 %	49 %	0,18	6 %
	7653-50955	6 %	47 %	5 %	0,18	5 %
	7653-50957	6 %	35 %	59 %	0,21	5 %
	7653-50958	4 %	12 %	84 %	0,28	4 %
	7653-50961	5 %	26 %	69 %	0,24	4 %
	7653-50962	5 %	32 %	63 %	0,23	4 %
	7653-50963	4 %	11 %	85 %	0,28	4 %