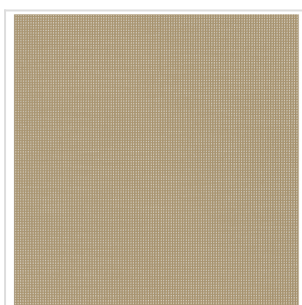
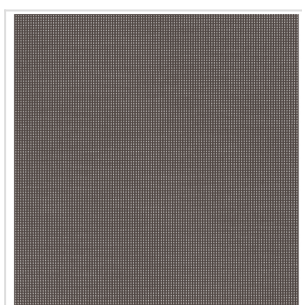


# Soltis 88 (hors collection)

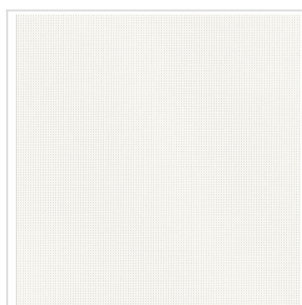
filtersun



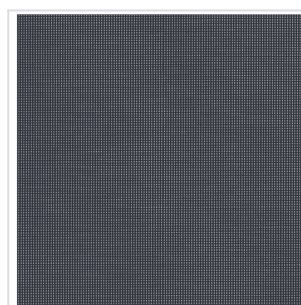
88-2012



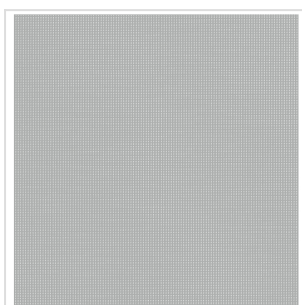
88-2043



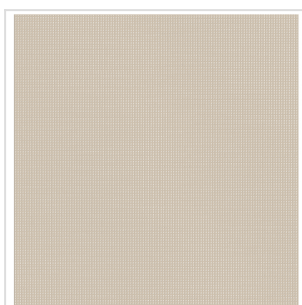
88-2044



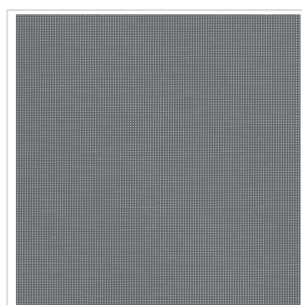
88-2047



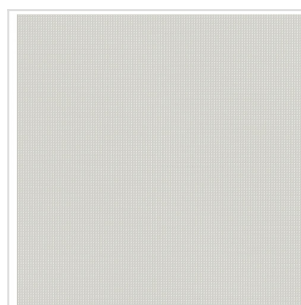
88-2048



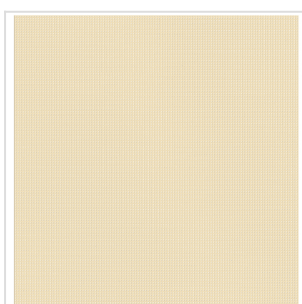
88-2135



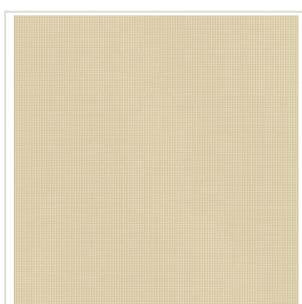
88-2167



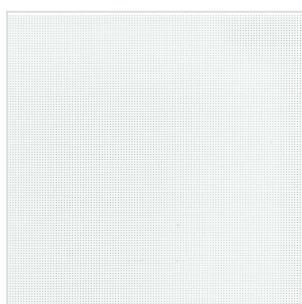
88-2171



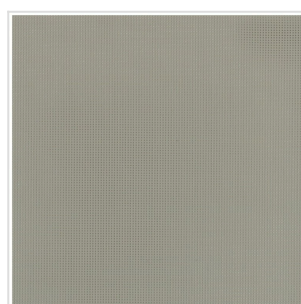
88-2175



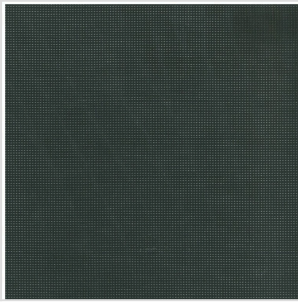
88-50265



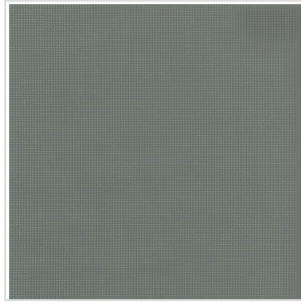
88-50690



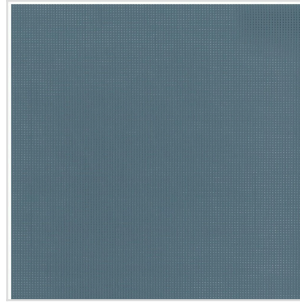
88-50850



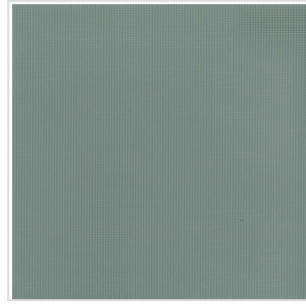
88-51176



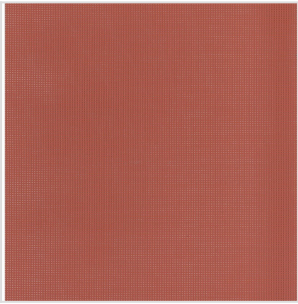
88-51177



88-51178



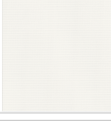




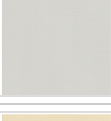

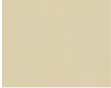


88-51179



88-51180

					
Rouleau intérieur Tarif 5 - Plus value : 49.44 € / m <sup>2</sup>	Rouleau extérieur Tarif C	Intérieur / Extérieur	Filtrant	M1	Euroclass B-s2,d0
<b>Poids (en g/m<sup>2</sup>)</b>	360				
<b>Coeff. ouverture (en %)</b>	8.00				
<b>Composition</b>	Polyester - PVC				
<b>Soudable</b>	Oui				
<b>Entretien</b>	Épongeable				
<b>Sens d'enroulement</b>	Vertical et horizontal				

Recto	Réf. rouleaux	Largeur de laize (mm)	Transmission solaire	Réflexion solaire	Absorption solaire	g <sub>tot</sub>	Transmission lumière visible
	88-2012	2670	12 %	29 %	59 %	0,07	10 %
	88-2043	2670	9 %	12 %	79 %	0,07	8 %
	88-2044	2670	24 %	65 %	11 %	0,13	22 %
	88-2047	2670	9 %	8 %	83 %	0,07	9 %
	88-2048	2670	13 %	44 %	43 %	0,08	12 %
	88-2135	2670	14 %	42 %	44 %	0,08	11 %
	88-2167	2670	9 %	16 %	75 %	0,07	9 %
	88-2171	2670	13 %	38 %	49 %	0,08	11 %
	88-2175	2670	24 %	62 %	14 %	0,12	21 %
	88-50265	2670	15 %	44 %	41 %	0,08	12 %

Recto	Réf. rouleaux	Largeur de laize (mm)	Transmission solaire	Réflexion solaire	Absorption solaire	gtot	Transmission lumière visible
	88-50690	2670	11 %	67 %	12 %	0,05	9 %
	88-50850	2670	11 %	27 %	62 %	0,05	69 %
	88-51176	2670	9 %	5 %	86 %	0,05	9 %
	88-51177	1770	10 %	16 %	74 %	0,05	10 %
	88-51178	1770	10 %	17 %	73 %	0,05	9 %
	88-51179	1770	11 %	25 %	64 %	0,05	10 %
	88-51180	1770	12 %	24 %	64 %	0,05	10 %