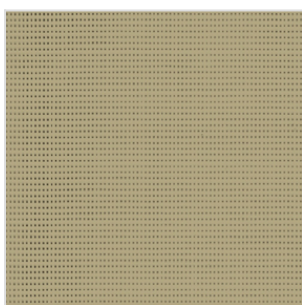
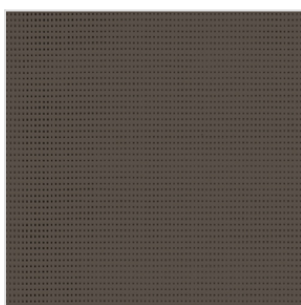


Soltis 86 (hors collection)

filtersun



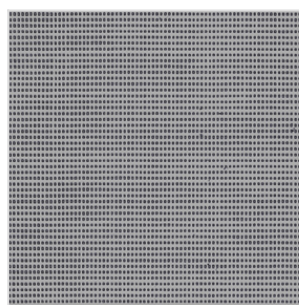
86-2012



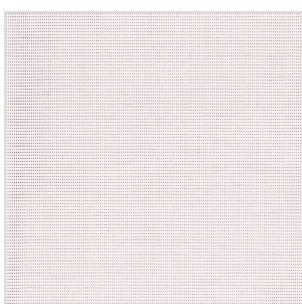
86-2043



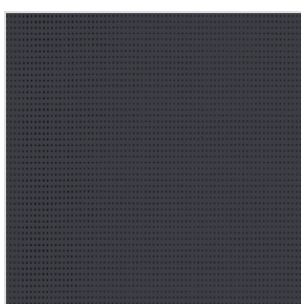
86-2044



86-2045



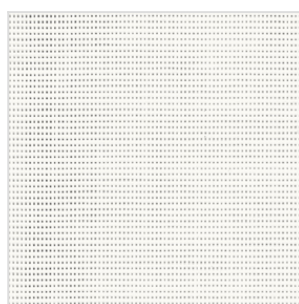
86-2046



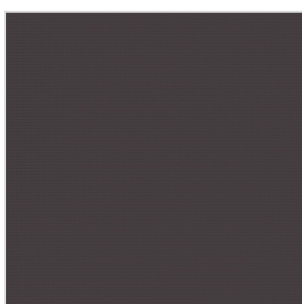
86-2047



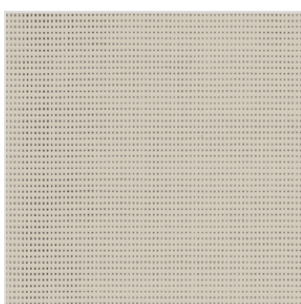
86-2048



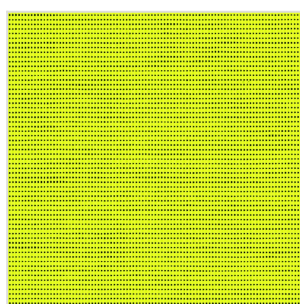
86-2051



86-2068



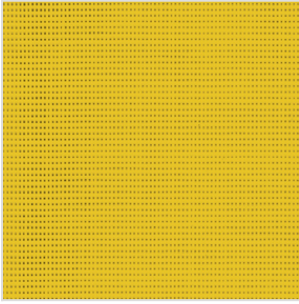
86-2135



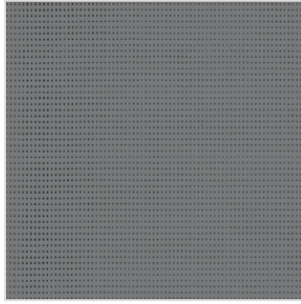
86-2157



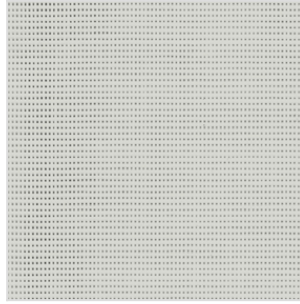
86-2158



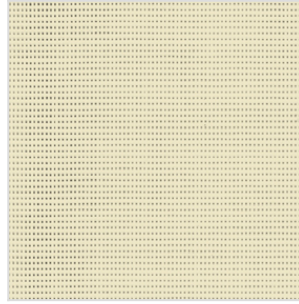
86-2166



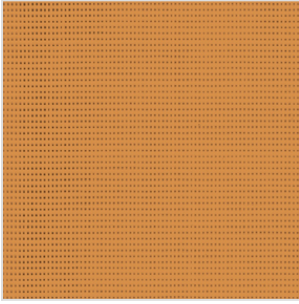
86-2167



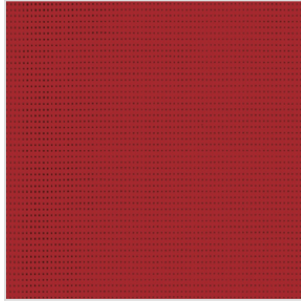
86-2171



86-2175



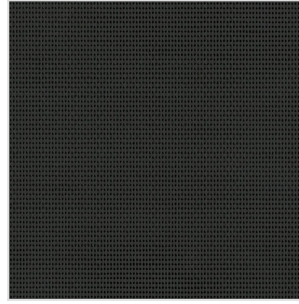
86-8204



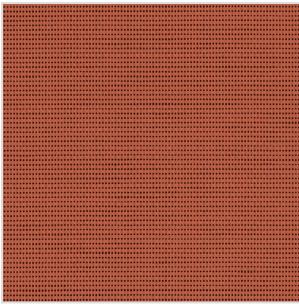
86-8255



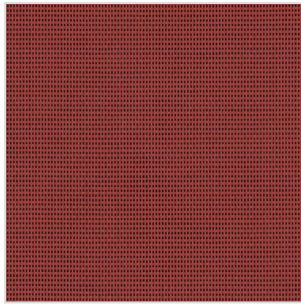
86-50690



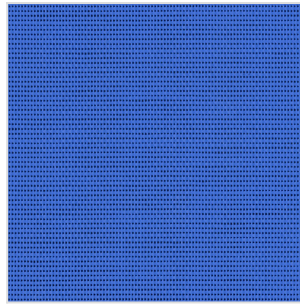
86-51176



86-51180



86-51181

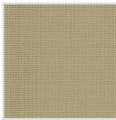

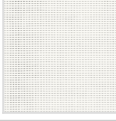

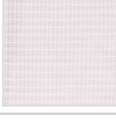
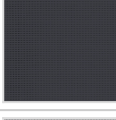


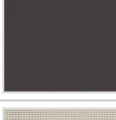



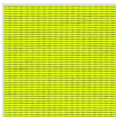


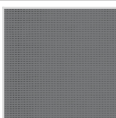
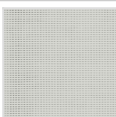
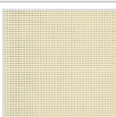
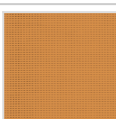
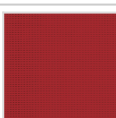
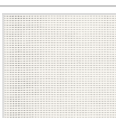
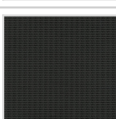

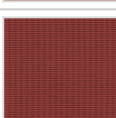
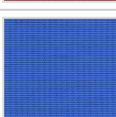
86-51182

 Rouleau extérieur
 Tarif C - Plus value : 20.72 € / m²

 Extérieur
  Filtrant
  M1
  Euroclass B-s2,d0

Poids (en g/m²)	380
Coeff. ouverture (en %)	14.00
Composition	Polyester - PVC
Soudable	Oui
Entretien	Épongeable
Sens d'enroulement	Vertical

Recto	Réf. rouleaux	Largeur de laize (mm)	Transmission solaire	Réflexion solaire	Absorption solaire	gtot	Transmission lumière visible
	86-2012	2670	18 %	27 %	55 %	0,08	15 %
	86-2043	2670	15 %	11 %	74 %	0,07	15 %
	86-2044	2670	29 %	59 %	12 %	0,11	15 %
	86-2045	2670	16 %	29 %	55 %	0,08	16 %
	86-2046	2670	22 %	40 %	38 %	0,10	16 %
	86-2047	2670	17 %	7 %	76 %	0,07	16 %
	86-2048	2670	19 %	39 %	42 %	0,09	15 %
	86-2051	2670	20 %	40 %	40 %	0,09	15 %
	86-2068	1770	17 %	31 %	52 %	0,08	17 %
	86-2135	2670	24 %	39 %	37 %	0,09	17 %

Recto	Réf. rouleaux	Largeur de laize (mm)	Transmission solaire	Réflexion solaire	Absorption solaire	g _{tot}	Transmission lumière visible
	86-2157	1770	25 %	44 %	31 %	0,08	21 %
	86-2158	1770	18 %	25 %	57 %	0,08	15 %
	86-2166	1770	31 %	45 %	24 %	0,11	15 %
	86-2167	2670	17 %	14 %	69 %	0,07	15 %
	86-2171	2670	22 %	36 %	42 %	0,08	16 %
	86-2175	2670	30 %	57 %	13 %	0,11	16 %
	86-8204	1770	29 %	41 %	30 %	0,10	15 %
	86-8255	1770	15 %	13 %	72 %	0,07	13 %
	86-50690	2670	28 %	61 %	11 %	0,11	27 %
	86-51176	2670	14 %	5 %	81 %	0,07	14 %
	86-51180	1770	17 %	24 %	59 %	0,07	15 %
	86-51181	1770	18 %	14 %	68 %	0,08	16 %
	86-51182	1770	18 %	23 %	59 %	0,07	15 %