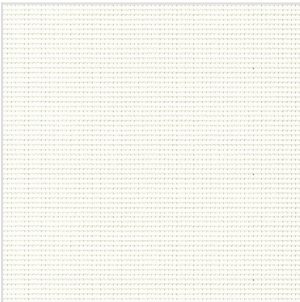
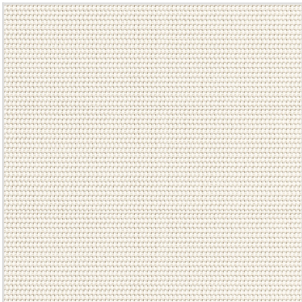


# Screen intérieur 5%

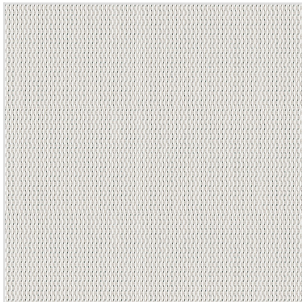
filtersun



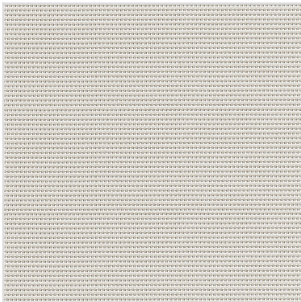
B1620 / R1620



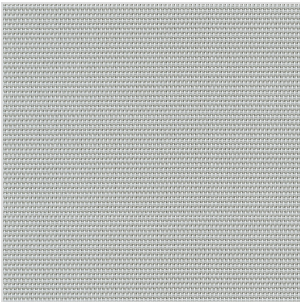
B1621 / R1621



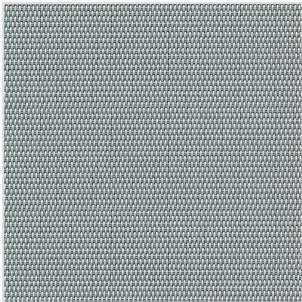
B1622 / R1622



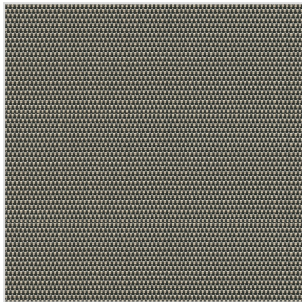
B1624 / R1624



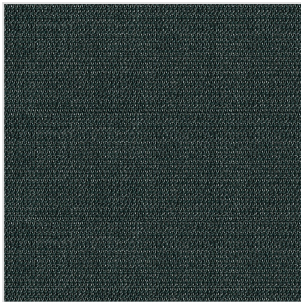
B1625 / R1625



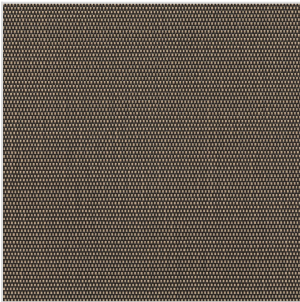
B1626 / R1626



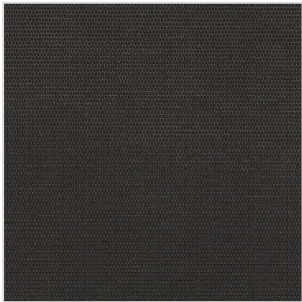
B1627 / R1627



B1628 / R1628

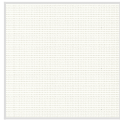
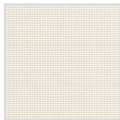
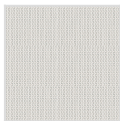

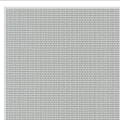
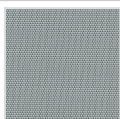
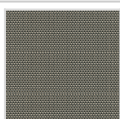

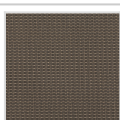
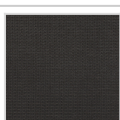


B1629 / R1629



B1630 / R1630

						
Rouleau intérieur Tarif 5	Bandes verticales 89 Tarif 5	Bandes verticales 127 Tarif 5	Paroi japonaise Tarif D	Intérieur	Filtrant	M1
<b>Poids (en g/m<sup>2</sup>)</b>	390					
<b>Coeff. ouverture (en %)</b>	5.00					
<b>Composition</b>	36 % fibre de verre - 64 % PVC					
<b>Soudable</b>	Oui					
<b>Entretien</b>	Épongeable					
<b>Sens d'enroulement</b>	Vertical et horizontal					
<b>Largeur de laize (mm)</b>	2500					

Recto	Réf. BV	Réf. rouleaux	Transmission solaire	Réflexion solaire	Absorption solaire	g <sub>tot</sub>	Transmission lumière visible
	B1620	R1620	21 %	67 %	12 %	0,31	21 %
	B1621	R1621	22 %	60 %	18 %	0,33	20 %
	B1622	R1622	18 %	52 %	30 %	0,37	16 %
	B1624	R1624	17 %	41 %	42 %	0,42	15 %
	B1625	R1625	16 %	34 %	50 %	0,44	14 %
	B1626	R1626	12 %	29 %	59 %	0,48	10 %
	B1627	R1627	6 %	12 %	82 %	0,53	5 %
	B1628	R1628	4 %	5 %	91 %	0,56	4 %
	B1629	R1629	7 %	12 %	81 %	0,53	6 %
	B1630	R1630	5 %	6 %	89 %	0,55	6 %