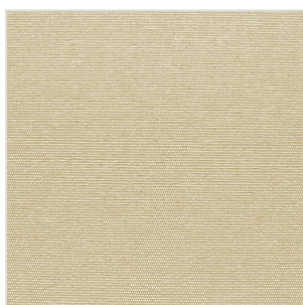
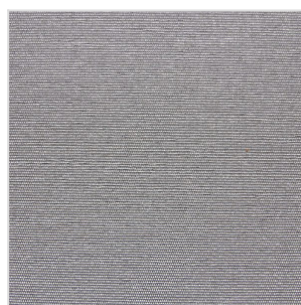


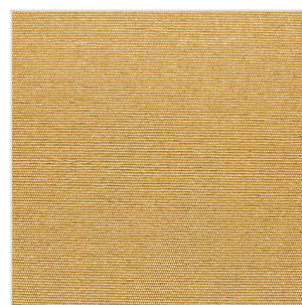
PU007



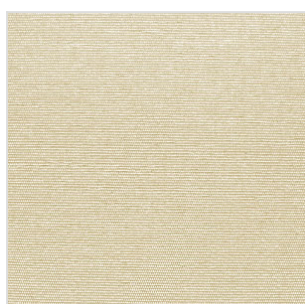
PU009



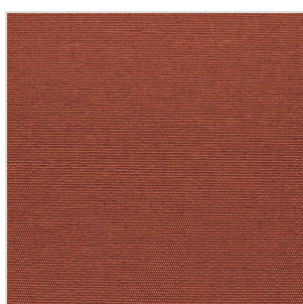
PU016



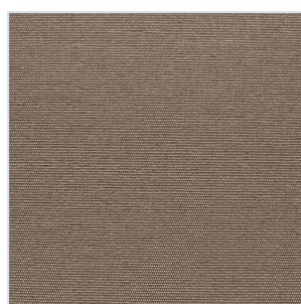
PU027



PU028



PU030



PU034



Autre  
Tarif 2



Intérieur



Semi occultant



M1



Trevira

**Composition**

100 % Trevira CS

**Soudable**








-

**Entretien**

Brosse

**Largeur de laize (mm)**

2250

Recto	Réf.	Transmission solaire	Réflexion solaire	Absorption solaire	gtot	Transmission lumière visible
	PU007	29 %	52 %	19 %	0,44	24 %
	PU009	29 %	52 %	19 %	0,44	22 %
	PU016	24 %	41 %	35 %	0,44	8 %
	PU027	29 %	51 %	20 %	0,44	26 %
	PU028	35 %	59 %	6 %	0,41	36 %
	PU030	23 %	39 %	38 %	0,49	5 %
	PU034	20 %	36 %	44 %	0,50	3 %